
Confronting the IPv4 Address Exhaustion

Tomoya YOSHIDA

JPNIC Expert Research Team

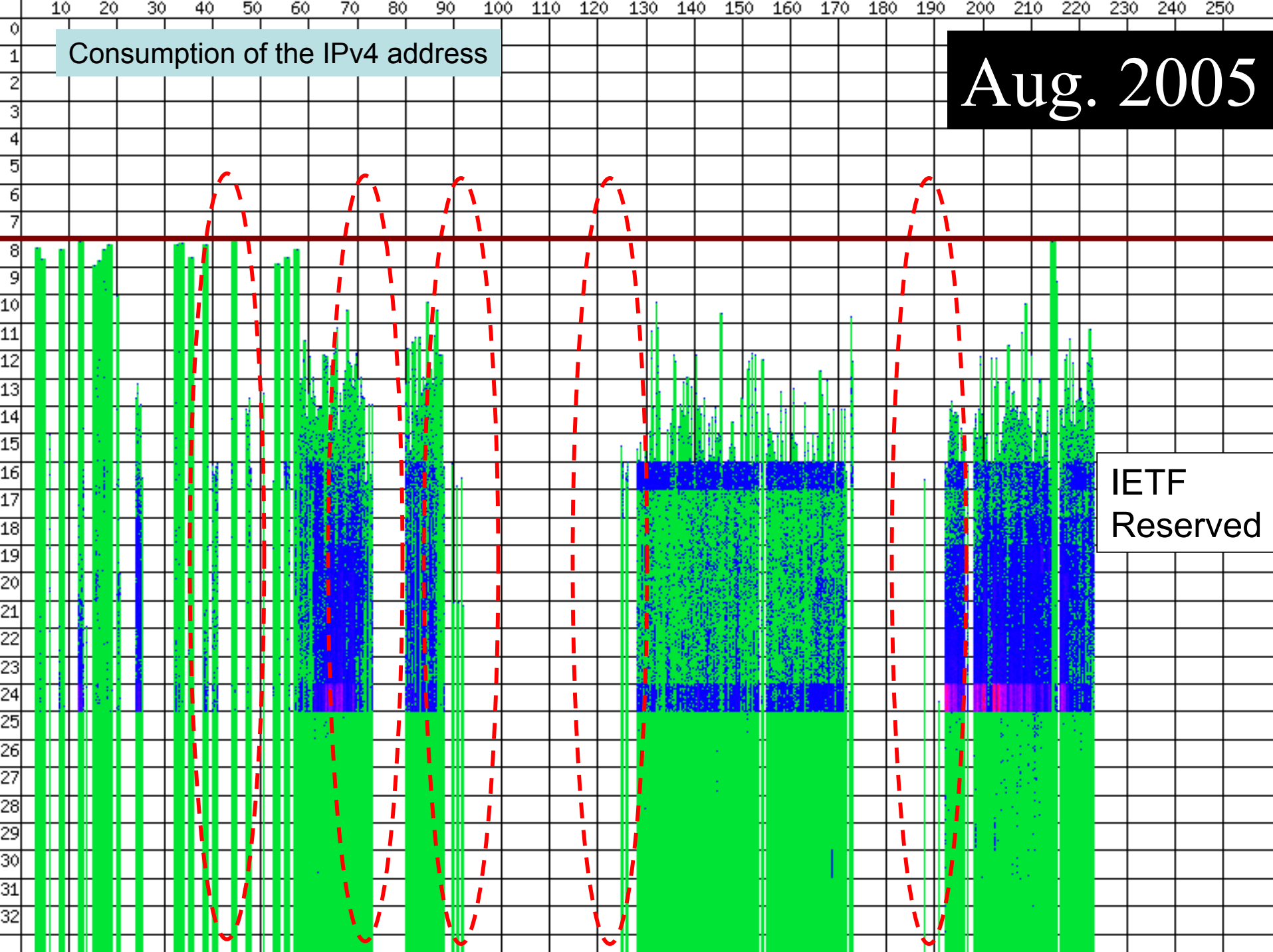
NTT Communications

yoshida@ocn.ad.jp

At the beginning ...

- Almost Internet users and services are on IPv4 Internet now
- However new comers will not be able to obtain IPv4 address any longer near future
- We should realize this fact

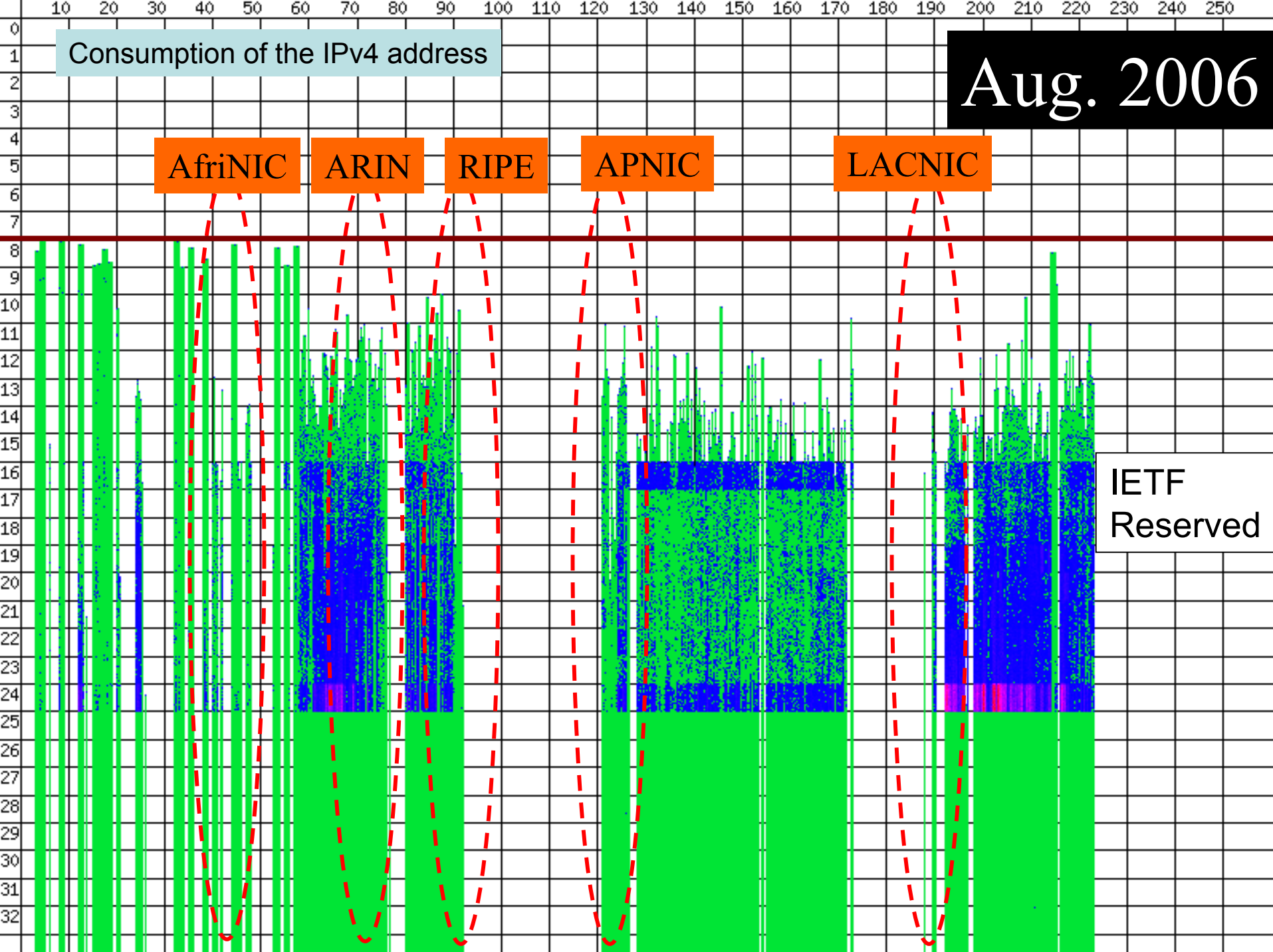
Is it really running out? When?



Consumption of the IPv4 address

Aug. 2005

IETF
Reserved



Consumption of the IPv4 address

Aug. 2006

AfriNIC

ARIN

RIPE

APNIC

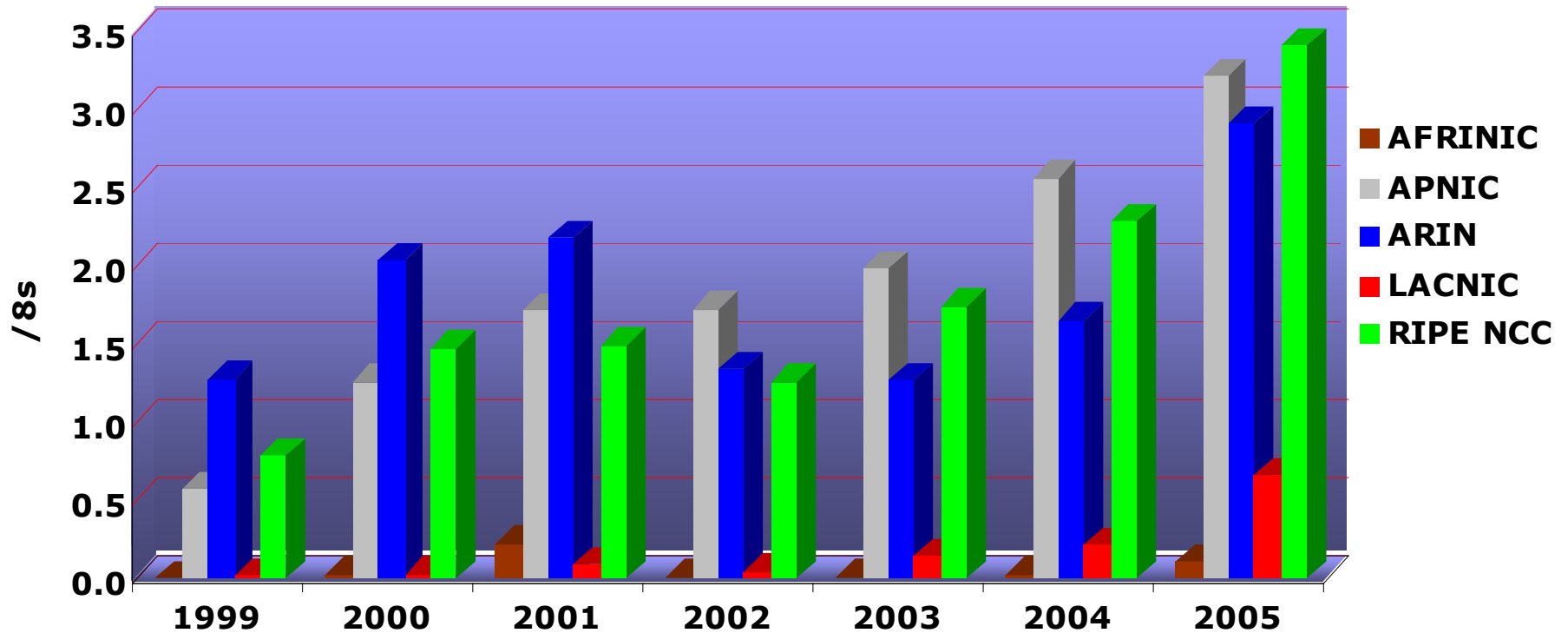
LACNIC

IETF Reserved

Is it really running out? When?

Annual consumption at Registries

Increasing /8 * 10 in 2005



Two forecasts of the exhaustion

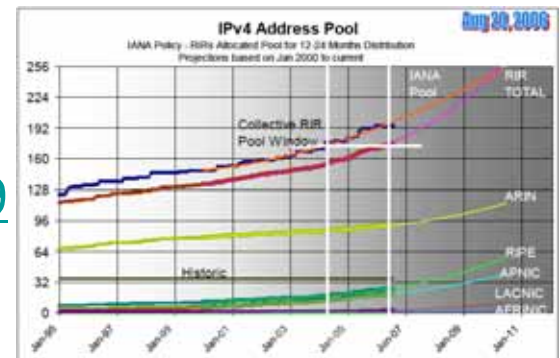
- **2012 to 2013**, by Geoff Huston of APNIC

- Report in December 2005
- Dynamic lifetime estimation system <http://ipv4.potaroo.net/>
- Recent forecast : **2011(IANA)** and **2012(RIR)**



- **2009 to 2016**, by Tony Hain of Cisco

- Report in November 2005
- http://www.cisco.com/application/pdf/en/us/guest/about/about/c644/ccmigration_09186a00805320df.pdf
- Recent forecast : **2011(RIR)**



JPNIC Expert Team released a report

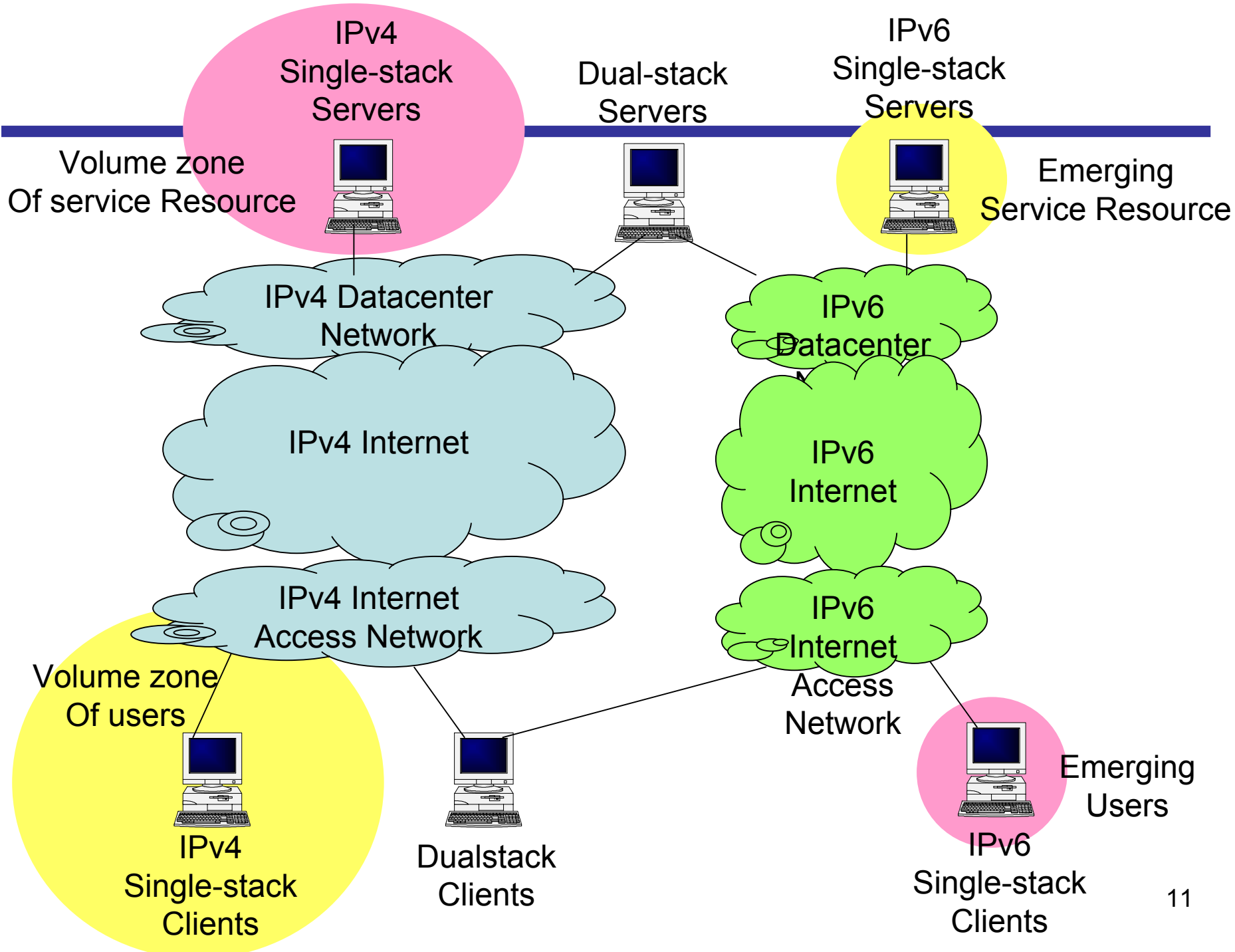
- *“Analysis and Recommendations on the Exhaustion of IPv4 Address Space”*
 - By the Team of 9 network operations experts
 - Released on **April 3, 2006**
 - The English version was finally released on **July 31, 2006**
 - <http://www.nic.ad.jp/en/topics/2006/20060731-01.html>
 - You can find the link from the top <http://www.nic.ad.jp/en/>
 - Dose not focus on the day of IPv4 address exhaustion
 - Offers various recommendations

A part of recommendations on this report

Section 5 of JPNIC's Report

- For Registries(ICANN/IANA/RIR/NIR)
 - Each registry involved with IP address space should share a consistent policy throughout the world
- For ISP
 - Should prepare to provide connectivity with IPv6 when or before IPv4 address space is exhausted
- For IP technology developers (vendors, etc)
 - Should be aware of the exhaustion of IPv4 address space and take more effort to develop and refine their IPv6 technology

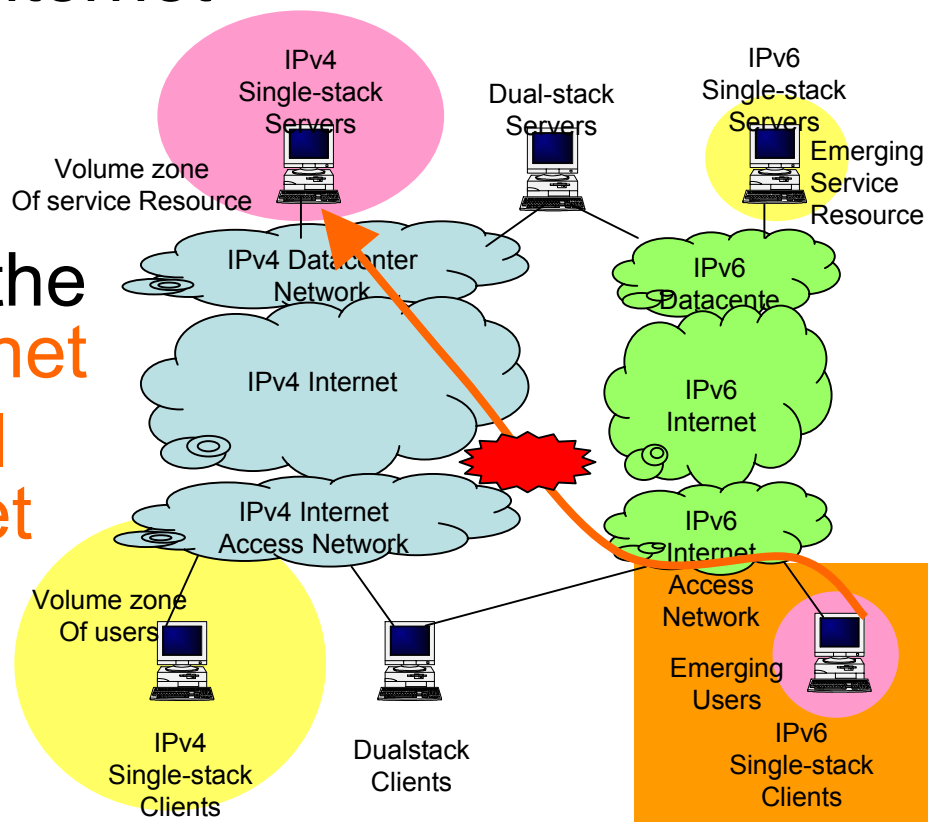
Who will be in trouble ?



Who will be in trouble? (client)

Section 4.6.3 of JPNIC's Report

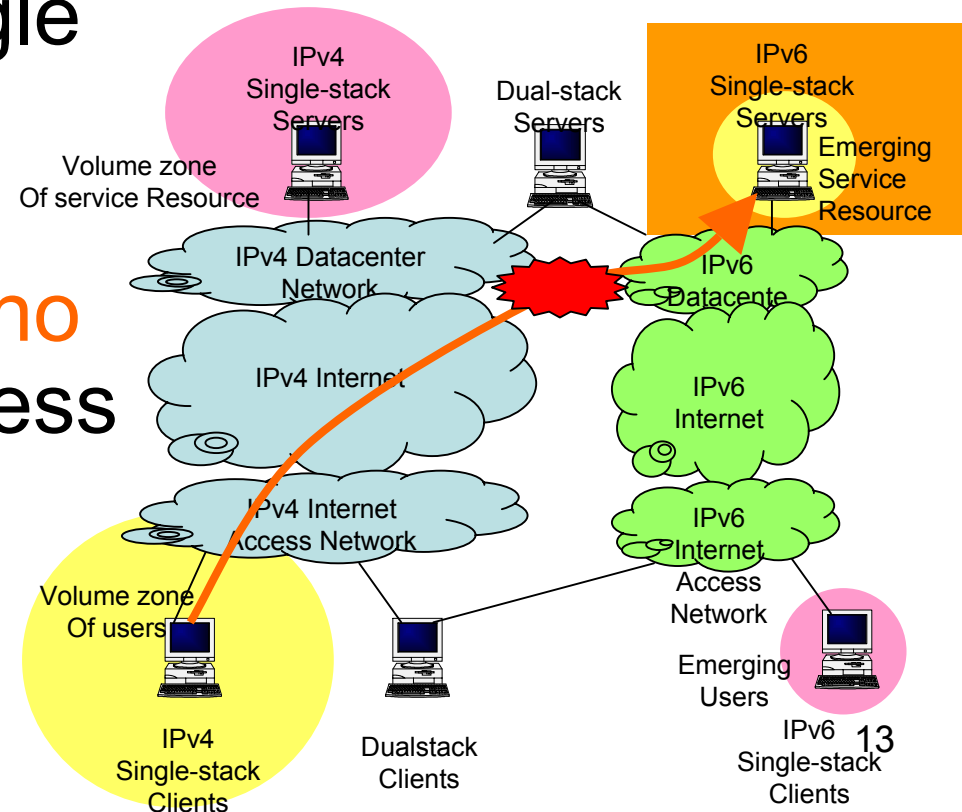
- New Internet users (client side) can use only the IPv6 Internet
- and **cannot access** to the IPv4 single stack servers that have **a wealth of information and services**
- the convenience of the Internet for users is provided by that servers
- so **new Internet users** will **not** be able to **enjoy** the convenience of **the Internet**
- In other words, **users will not connect to an Internet that does not offer any convenience**



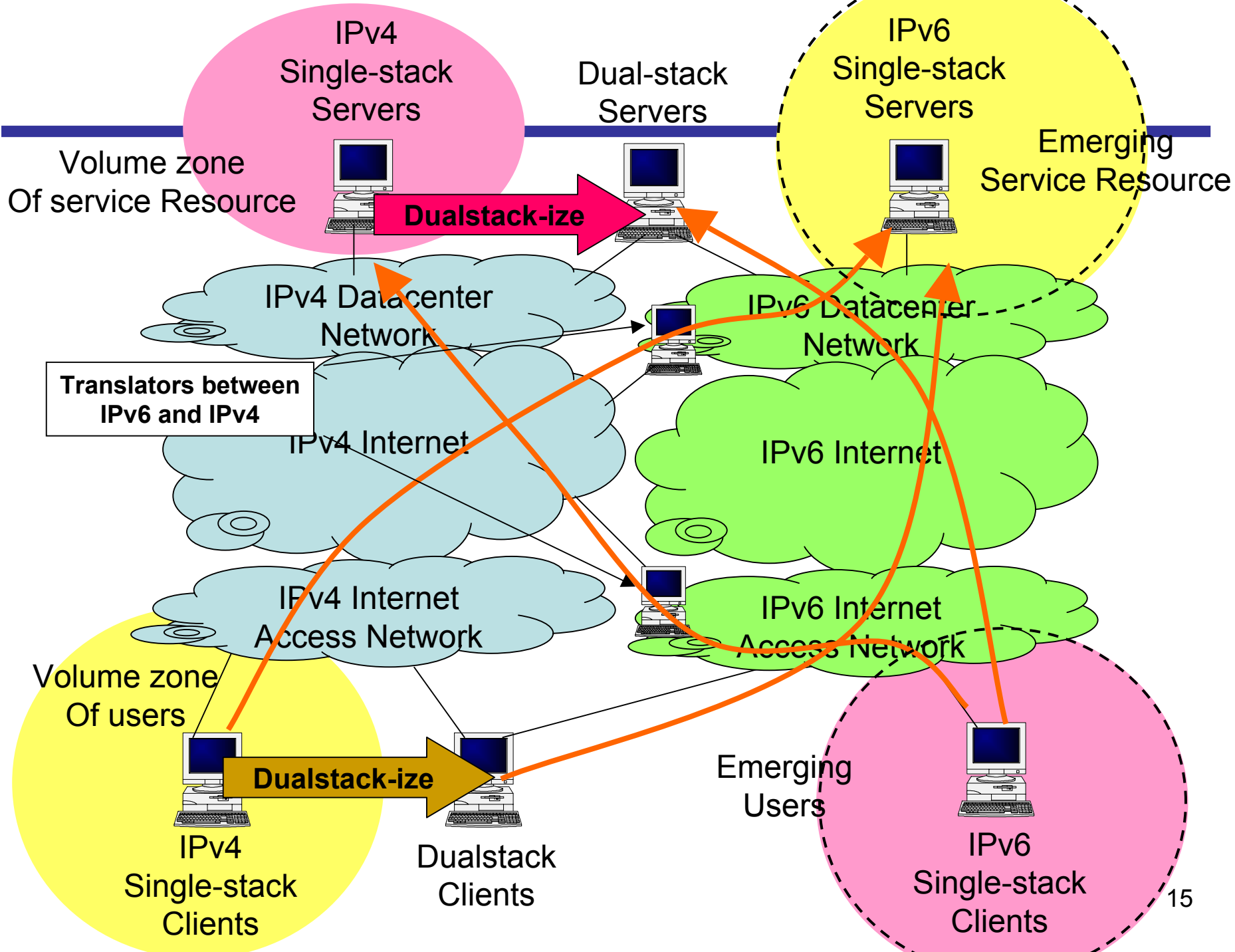
Who will be in trouble? (server)

Section 4.6.3 of JPNIC's Report

- New service providers (server side) can use only the IPv6 Internet
- and **cannot provide services for** users of IPv4 single stacks that form a volume zone
- Consequently **it has no importance** for business
- and **their business will not develop**



A possible scenario for the transition to IPv6 Internet



Conclusion

Don't get into panic but get prepared

- Are you aware of the exhaustion?
 - It will come in several years (== depreciation term) .
 - You need to get ready by then
- ISP operators and Venders need to realize, be confident and take action
 - Need more precise information
 - JPNIC will keep on providing refined information
- It's a pure problem of the Internet Operations
 - Coordination and Collaboration will be the key

Thank you !

Again, the report is available at

<http://www.nic.ad.jp/en/topics/2006/20060731-01.html>

You can find the link from Top page of JPNIC Web

<http://www.nic.ad.jp/en/>

Confront the IPv4 Address Exhaustion

Tomoya YOSHIDA, JPNIC Expert Research Team

yoshida@ocn.ad.jp, tech-swg@nic.ad.jp