



JP Economy Update

28th August 2012

Phnom Penh, Cambodia

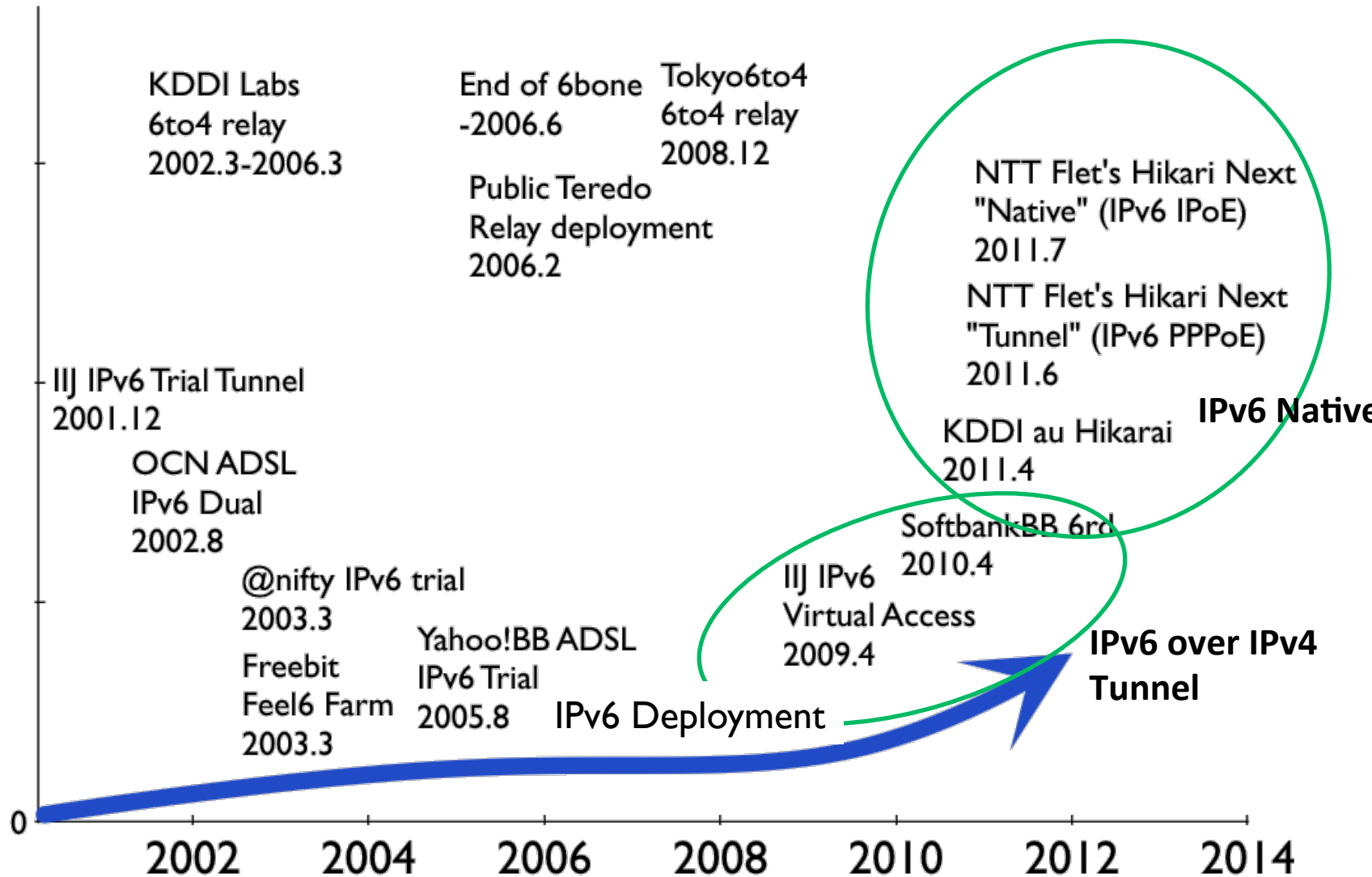
Tomohiro Fujisaki

Asia Pacific IPv6 Task Force Japan Delegate

Contents

- IPv6 deployment status in Japan
- Deployment activities in Japan

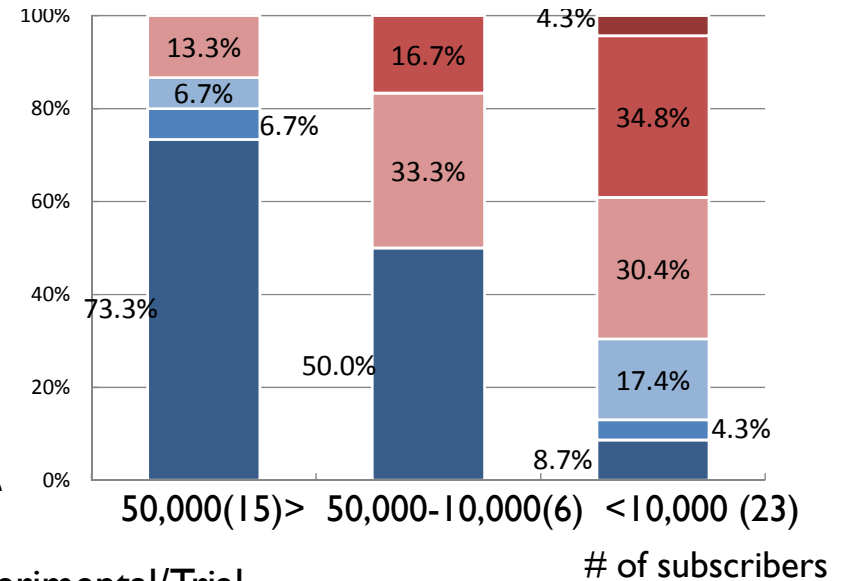
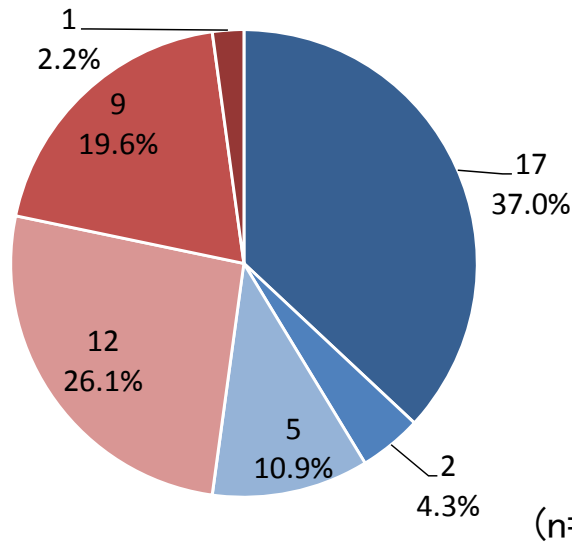
IPv6 service for residential users in Japan



IPv6 status in Japan

- IPv6 study group in MIC (The Ministry of Internal Affairs and Communications) published '3rd progress report' on 31st July 2012.
 - http://www.soumu.go.jp/menu_news/s-news/01kiban04_02000040.html (in Japanese)

Result of survey to ISPs by MIC



- Provided (commercial)
- Under Consideration
- Planned
- Decided not to provide
- Experimental/Trial
- No Plann

Status of the IPv6 Internet Service (as of March 2012)

Progress for IPv6 Service in Japan

ISP Name	Access Technology for IPv6	Service	Status
ISPs using NTT East/West Internet access platform	FTTH	Commercial	<ul style="list-style-type: none"> Plan to provide IPv6 service by default Try to make additional cost for users lower (connectivity, CPE and so on)
KDDI	FTTH	Commercial	<ul style="list-style-type: none"> IPv6 service by default (from Apr 2011) Adding IPv6 service to existing users without any additional cost and application by users (will complete in 2012)
K-Opticom	FTTH	Commercial	<ul style="list-style-type: none"> Providing IPv6 service since Jul. 2011 (user application basis)
FreeBit	(Outsourcing service to ISPs)	Commercial	<ul style="list-style-type: none"> Providing IPv6 service to ISPs using NTT East/West platform for free.
J: Com	CATV	-	<ul style="list-style-type: none"> Plan to start IPv6 service in 2012 without additional fee (user application basis).
NTT Docomo	Mobile (LTE/3G)	Commercial	<ul style="list-style-type: none"> Providing IPv6 LTE service on data communication equipment. Considering to provide more IPv6 terminals
KDDI	Mobile	Commercial	<ul style="list-style-type: none"> Plan to start IPv6 service in 2012 with multiple devices

Based on http://www.soumu.go.jp/main_content/000170192.PDF

Consideration for IPv6 service

How to deploy IPv6 service wider?

To ISPs:

- It is desirable to provide IPv6 service with IPv4 service by default
 - Since there are few merits of IPv6 for users now, the service should be provided without any user's action (no cost, no configuration and no application).



IPv6 Deployment Activities in Japan

IPv6 education activities

- We've conducting IPv6 training course for operators.
 - Hands-on session for server, network, SOHO and CATV operators.

Hands-on materials are available.
If you have interest, please contact me.



Activities of IPv6 home Router SWG in IPv6 PC

- A key component of IPv6 deployment is ‘Home Routers’.
 - One target of W6L.
 - <http://www.worldipv6launch.org/participants/?q=3>
- In this SWG, we’ve been discussing IPv6 residential home router specifications
<http://www.v6pc.jp/en/wg/coexistenceWG/v6hgw-swg.phtml>
 - Latest guidelines
 - http://www.v6pc.jp/pdf/v6hgw_Guideline_20.pdf

Activities of IPv6 fix SWG in IPv6 PC

IPv6 fix SWG created 'IPv6 deployment issues' document

- <http://www.v6pc.jp/jp/wg/coexistenceWG/v6fix-swg.phtml> (in Japanese)

Translated version:

- <http://wiki.nttv6.net/cgi-bin/wiki.cgi>
- English version describes three major issues in detail
 - Fallback, Rouge RA, and Path MTU



Thank you for your attention

IPv6 Promotion Council in Japan

- IPv6 Promotion Council
 - Established on 2001.
 - Aims
 1. Pursue an international leadership role for Japan in the Internet field
 2. Develop rich human resources for continuous development of a new infrastructure for a high information society
 3. Promote new business and vitalize existing business in hardware, software and service of networks and devices
 - <http://www.v6pc.jp/en/index.phtml>

Working Groups in IPv6 PC

